

# Sebodulin

Restoration of healthy hydrolipidic film on skin

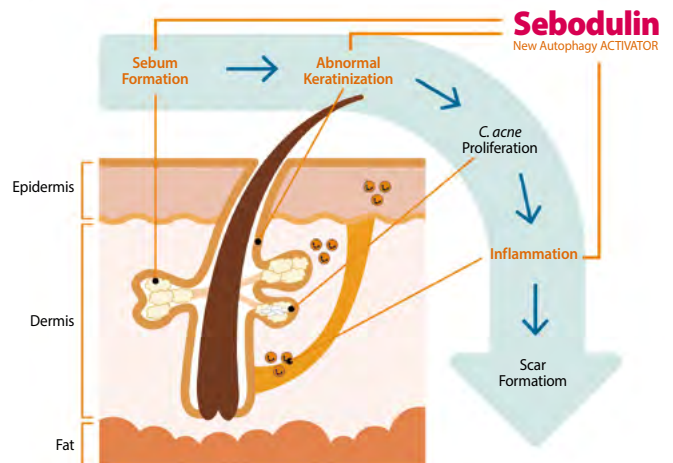


The first sebum formation (sebogenesis) modulating ingredient based on autophagy signaling, helping to restore the healthy hydrolipidic film on skin with anti-inflammatory activity against *C. acne*



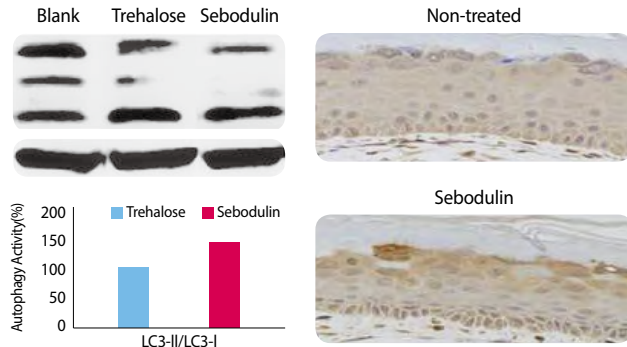
## Description

Excessive sebum formation, follicular epithelial barrier dysfunction, and inflammatory responses induced by *Cutibacterium acne* are major triggering and aggravating factors for acne. While conventional anti-acne ingredients addressing sebum formation usually dry up the skin surface, resulting in skin dryness, Sebodulin restores healthy hydrolipidic film by activation of autophagy in sebocytes, the sebum making cells in skin. Sebodulin also help to alleviate the inflammatory responses by *C. acne* and to improve the skin barrier function.



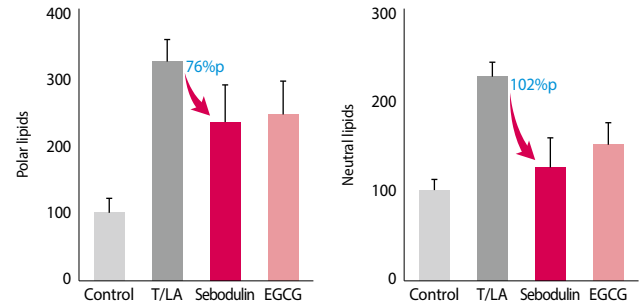
## Biological activity

### New Autophagy Activator



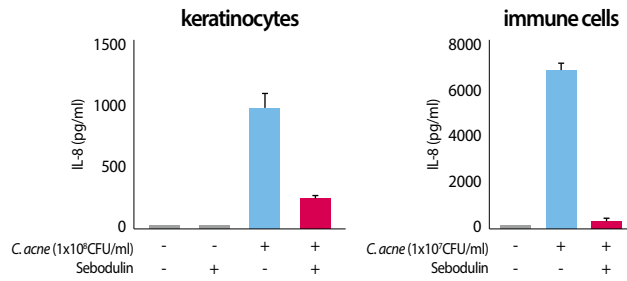
Sebodulin activates the autophagy in cultured immortalized sebocytes(left) and reconstituted skin model(right).

### Reduction of Sebum Formation



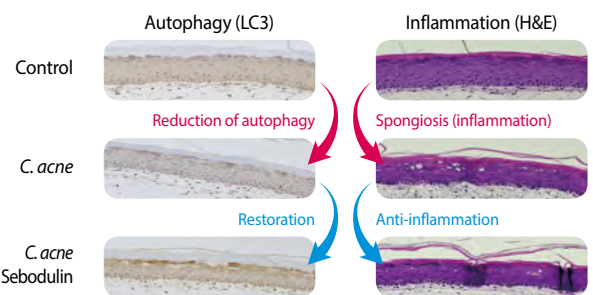
Sebodulin reduces lipid synthesis in cultured human sebocytes

### In vitro Anti-inflammatory Activity



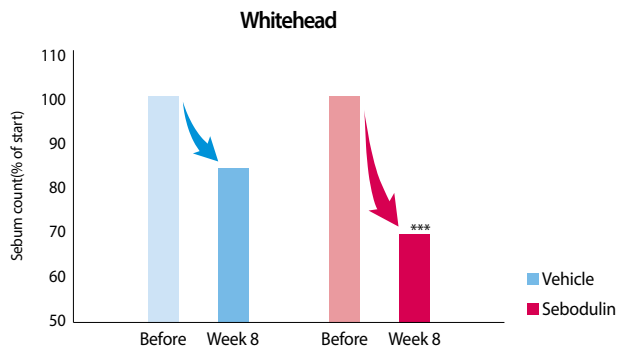
Sebodulin inhibits pro-inflammatory cytokine IL-8 secretion in skin keratinocytes(left) and immune cells(right) treated with cell free extract of *C. acne*.

### Reduction of Inflammatory Response by *C. acne*

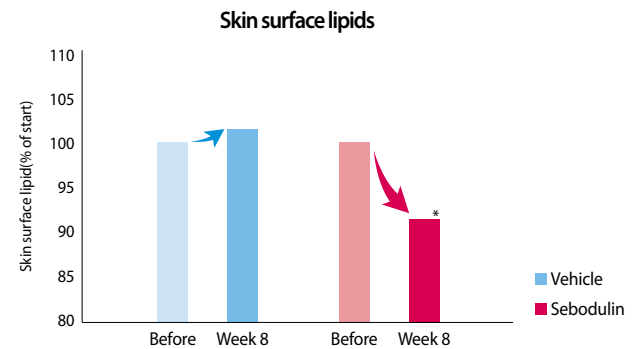


Sebodulin prevents reduction of autophagy and increase of inflammation caused by topical application of *C. acne* in reconstituted skin model

## Clinical efficacy



Sebodulin contained product reduces whitehead by 30% than before (by investigator assessment).



Sebodulin contained product reduces quantity of skin surface lipid (by sebumeter).

### PCPC/INCI Name

- Pentasodium Tetracarboxymethyl Heptadecanoyl Dipeptide-12

### Composition

- Sebodulin, 1,2-Hexanediol, Water

### Application

- Anti-inflammation
- Anti-greasiness
- Anti-ACNE

### Recommended Dosage

- 1~2% for cream, lotion and essence
- 0.01~0.1% for masksheet