

MelaTrepein™

A novel dual targeting solution of skin hyperpigmentation

More
Safety

More
Activity

More
Efficiency

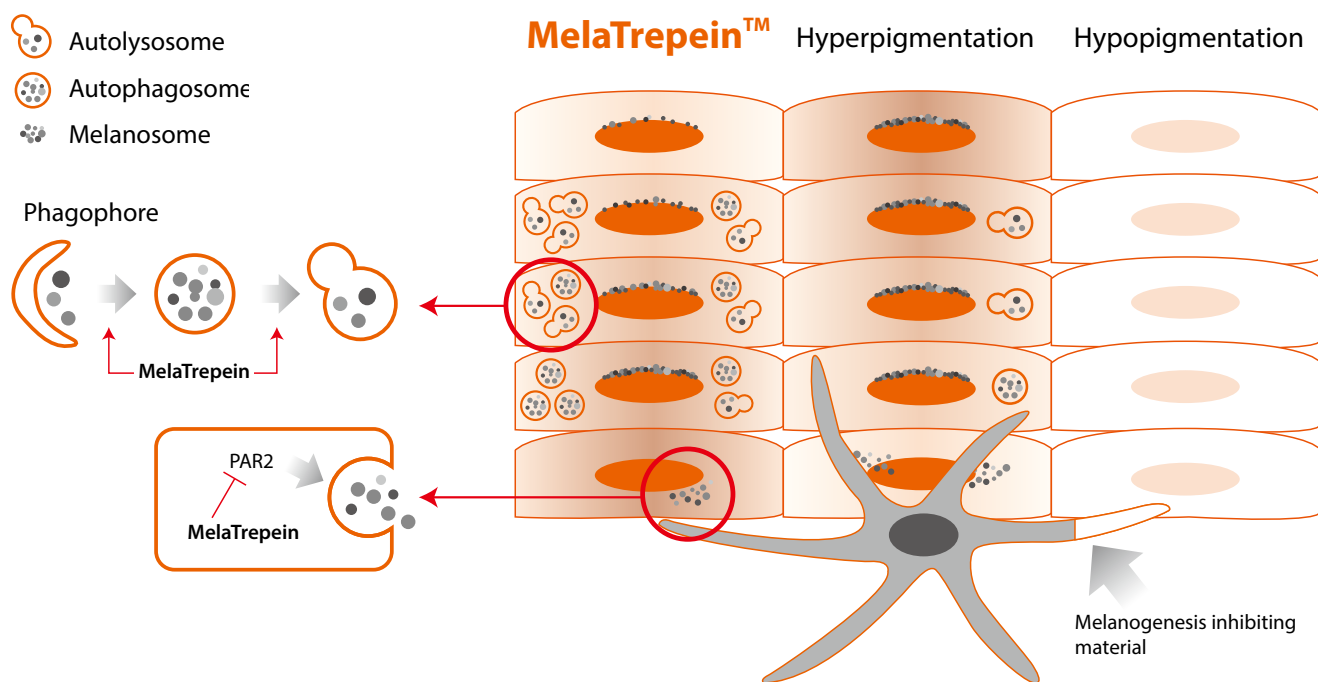
incospharm

Revised 2018 June

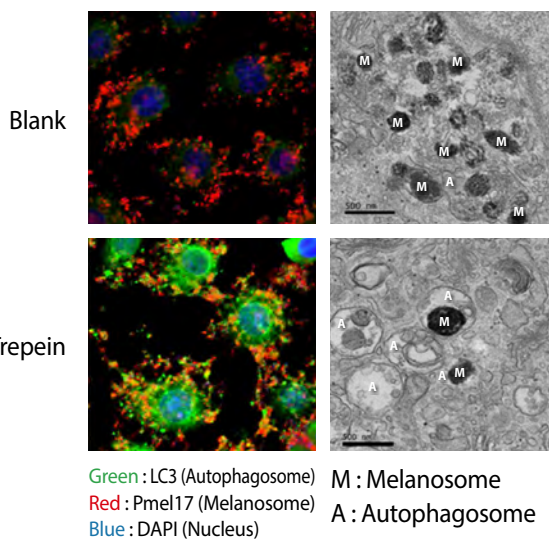
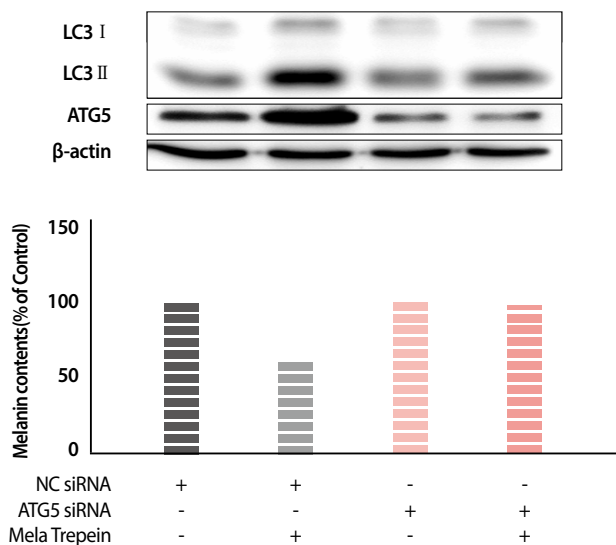
MelaTrepein™

Melanosomes are transferred to neighboring keratinocytes and then naturally degraded by autophagy. However, when the skin is constantly exposed to sunlight, pathogens, and hormone changes, the intracellular organelles and enzymes lose their functions and, as a result, melanosomes can not be degraded down. Accumulation of undegraded melanosomes in keratinocytes results in skin pigmentation.

MelaTrepein™ provides a dual targeting solution to prevent or reduce skin pigmentation by activating autophagy to break down melanosomes in keratinocytes and by inhibiting melanosome uptake into keratinocytes at the same time.



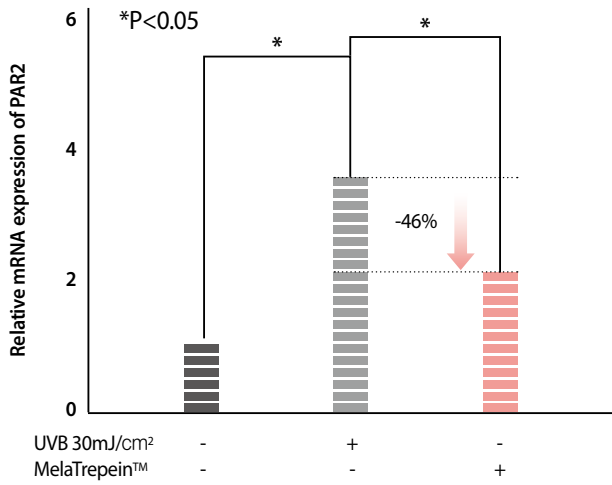
MelaTrepein™ degrades melanosome through activation of autophagy



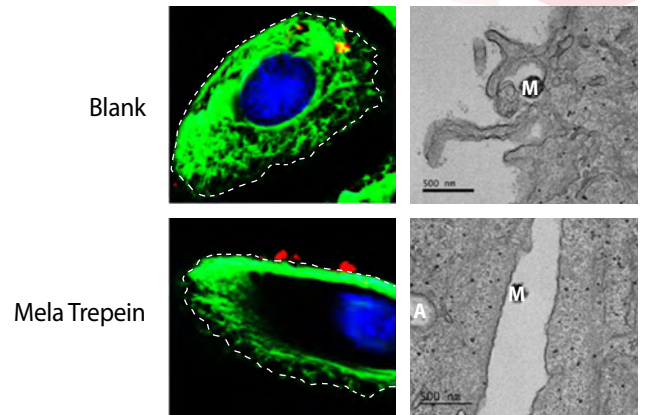
Inhibition of autophagy by ATG5 Knock-Down decreases melanin reduction by MelaTrepein™ in keratinocyte

MelaTrepein™. Increases co-localization of autophagosome and melanosome in keratinocyte

MelaTrepein™ reduces melanosome endocytosis

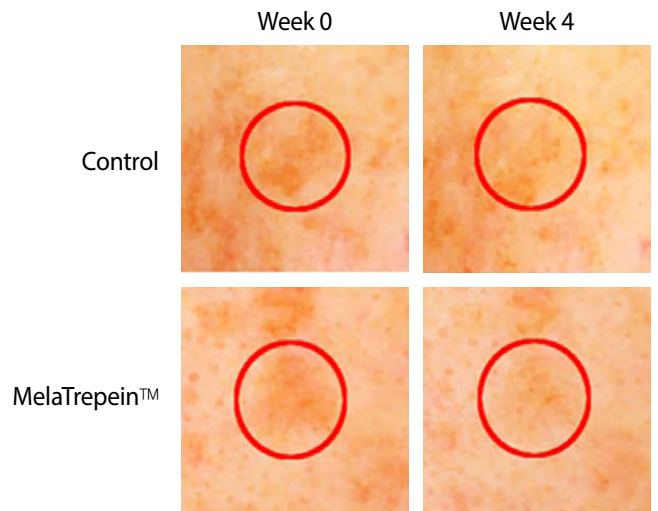
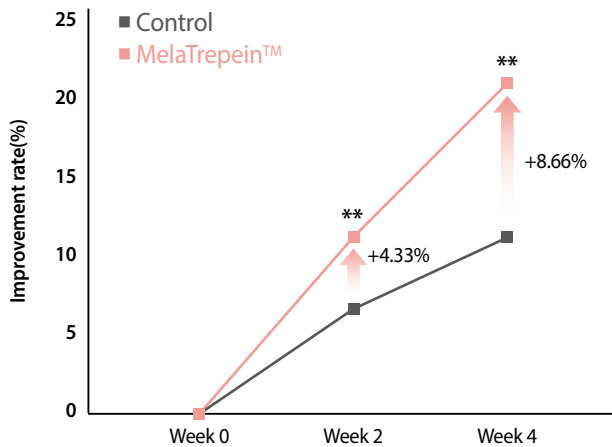


MelaTrepein™ reduces PAR2 mRNA expression in keratinocyte



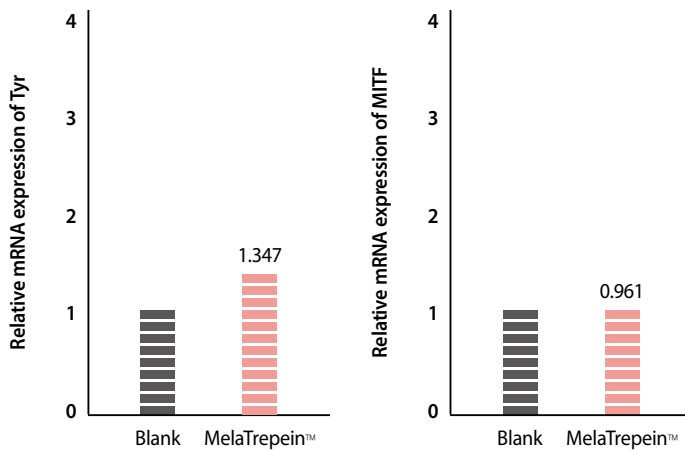
MelaTrepein™ inhibits phagocytosis and reduces melanosome entry into keratinocytes

MelaTrepein™ improves hyperpigmentation

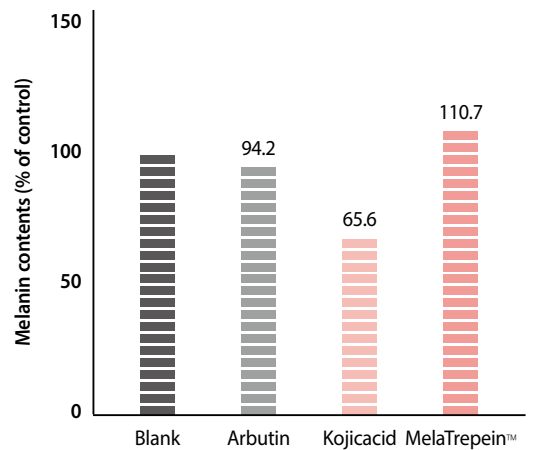


MelaTrepein™ improves hyperpigmentation significantly

MelaTrepein™ does not affect melanogenesis



MelaTrepein™ dose not affect MITF & tyrosinase mRNA expression in melanocyte



MelaTrepein™ dose not affect melanin contents in melanocyte

Efficacy

- Activates autophagy
- Reduces PAR2 expression
- Melanosome degradation
- Inhibits melanosome entry

Composition

- 0.5% MelaTrepein™
- 2% 1,2-Hexanediol
- 97.5% Water

Application

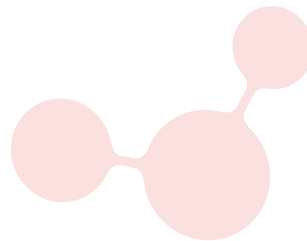
- Anti-pigmentation
- Skin care
- Sun care
- Anti-aging
- Anti-inflammation

Recommended Dosage

- 1~2% for Skin brightening cream, lotion formulation

Technical Data Sheet

Trade Name	MelaTrepein™
Description	Liquid of 5000ppm MelaTrepein
Appearance	Clear liquid with characteristic odor
Shelf Life	12 months
Storage	Room temperature, tightly closed
Pack Sizes	1kg



Incospharm Corporation

328, Techno 2-ro, Yuseong-gu, Daejeon, 34036, South Korea

Tel. 82-42-226-4337 Fax. 82-42-226-4338

order@incospharm.com www.incospharm.com