



LiftDerm 2000

INCI name : Biotinoyl hexapeptide-2 amide

AQUATIDE 5000

LiftDerm 2000

AdipoSOL™ 2000

Bioredoxyl

Wasabi Flavone

Pineapple Ceramide

rhEGF



Use 1 ingredient
Get 3 effects

01

콜라겐
증가

02

DEJ
강화

03

Adipogenesis
증가

3 step wrinkle reduction

LiftDerm 2000 는 세가지 방법으로 미세주름을 효과적으로 극복합니다.

• Fibroblast cell의 콜라겐 생산 증가 • Keratinocyte의 Collagen-XVII, Laminin-5, Integrin-α6 생산 증가 • Adipogenesis와 Myogenesis의 강화

주름

- DEJ의 약화 ↓
- 콜라겐 섬유의 유실 ↓
- Adipocyte의 감소 ↓

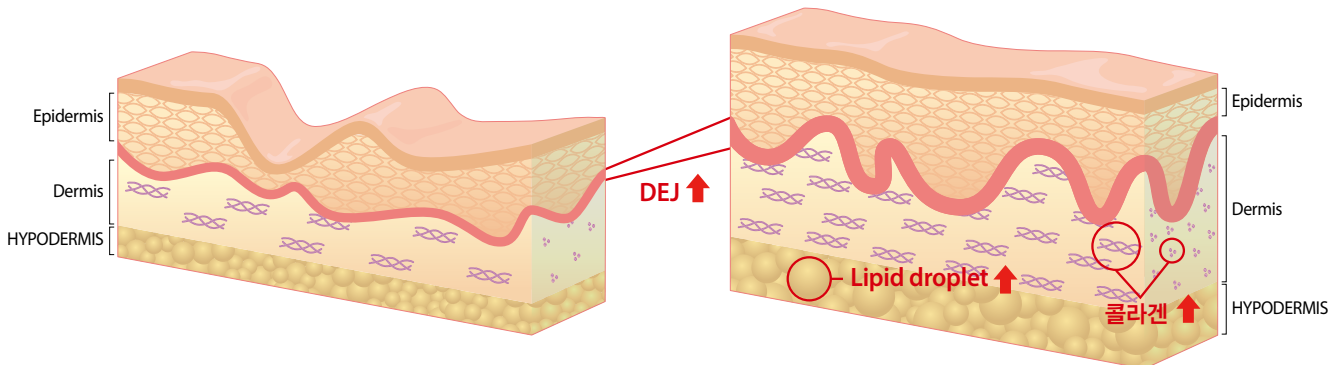
LiftDerm 2000

극복

- DEJ강화 ↑
- Adipogenesis 증가 ↑
- 콜라겐 발현 촉진 ↑

Aged skin

Young skin



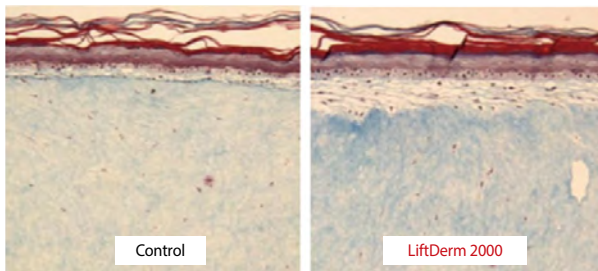
*DEJ : Dermal-epidermal junction(표피 진피 결합)

효능 · 항노화
· 주름개선

제품 함량 기준 · 크림, 에센스 : 1~5%

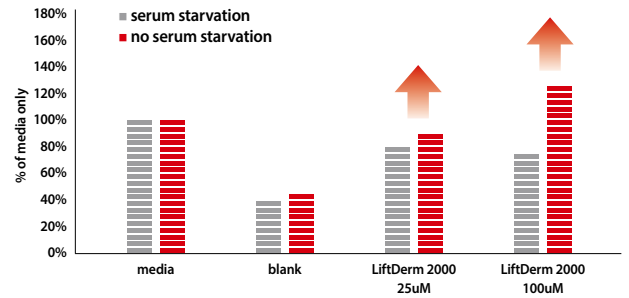
Biological and Clinical Activity

Step1 : Collagen type-1



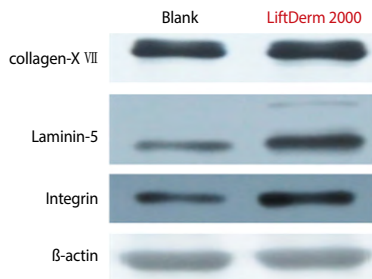
Masson's trichrome staining

LiftDerm 2000은 3D 인공피부에서 collagen type1의 발현을 촉진합니다.

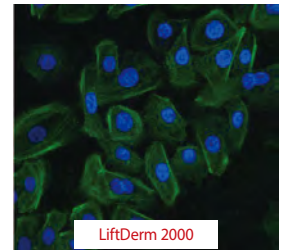
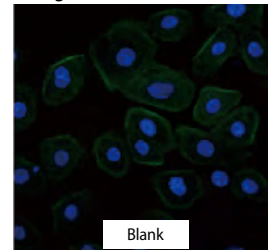


LiftDerm 2000은 각질형성세포에 의한 콜라겐 생성 감소를 방지해 줍니다.

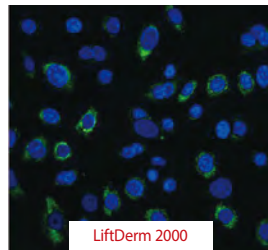
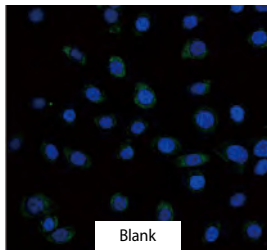
Step2 : Cell-to-cell communication



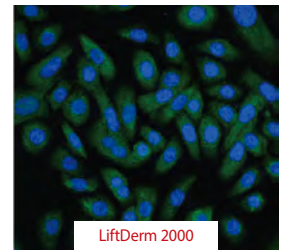
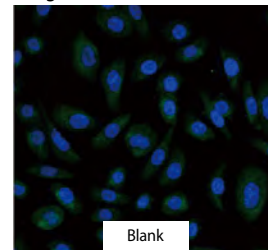
Collagen X VII



Laminin-5

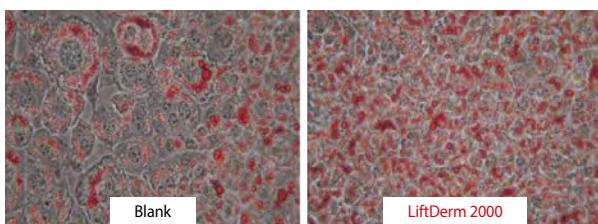


Integrin-α6



LiftDerm 2000은 keratinocyte cell에서 collagen XVII, laminin-5, integrin α-6의 발현을 증가 시킵니다.

Step3 : Adipogenesis



LiftDerm 2000은 활성화된 pre-adipocyte cell에서 지질방울의 형성을 촉진합니다.

Final effect : Wrinkle reduction

